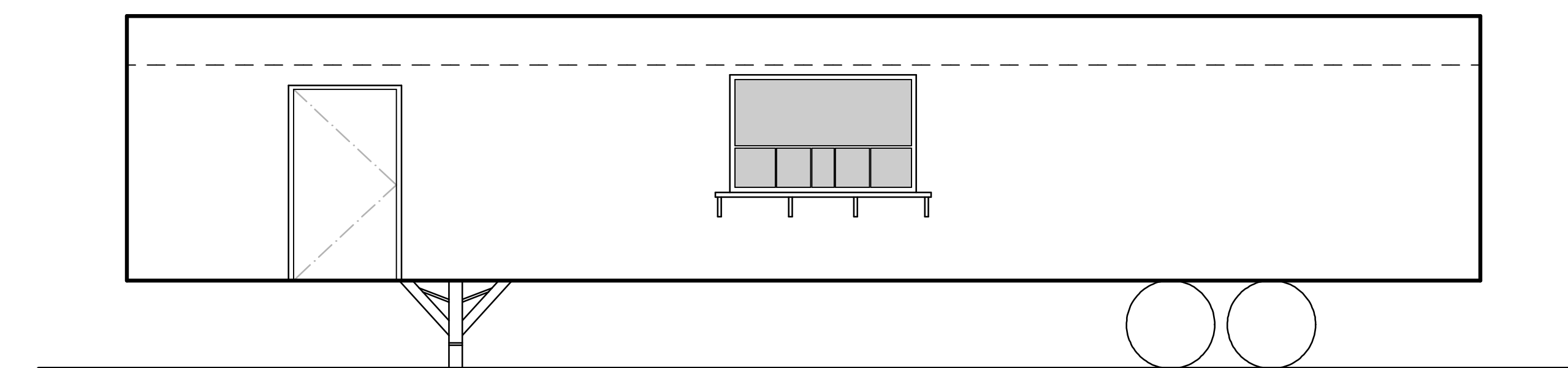
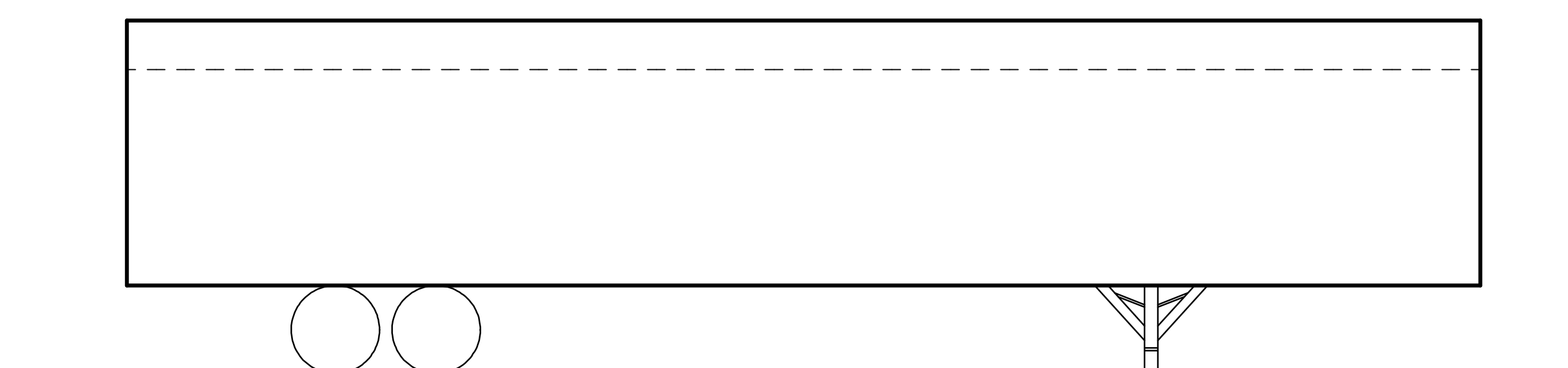
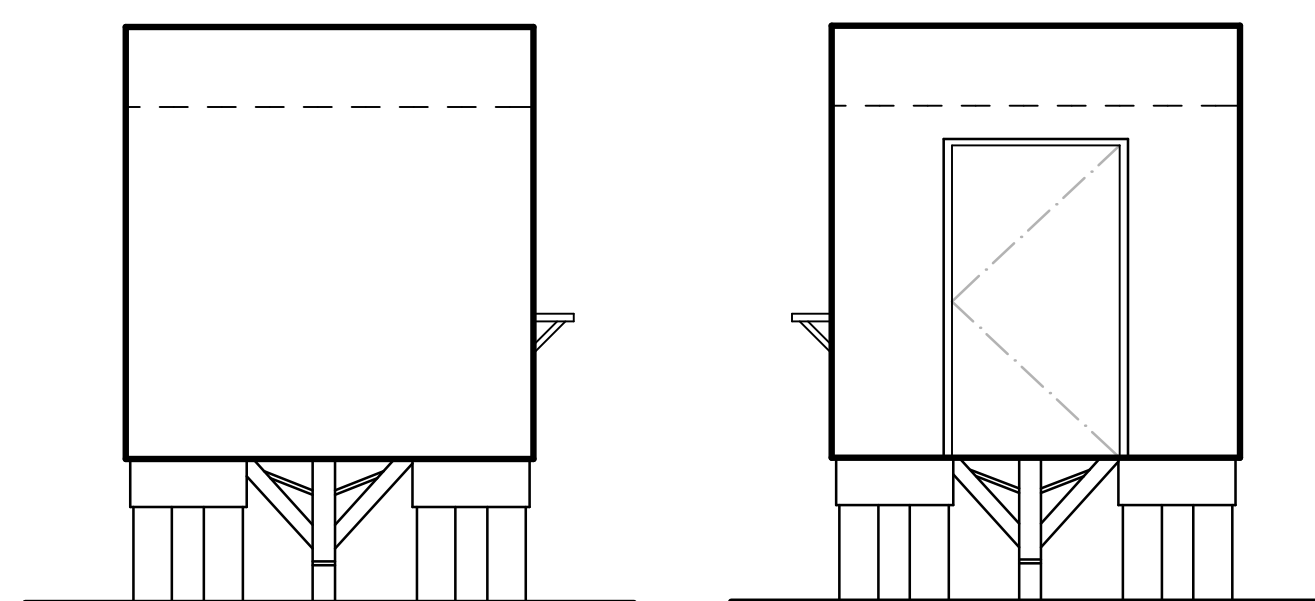
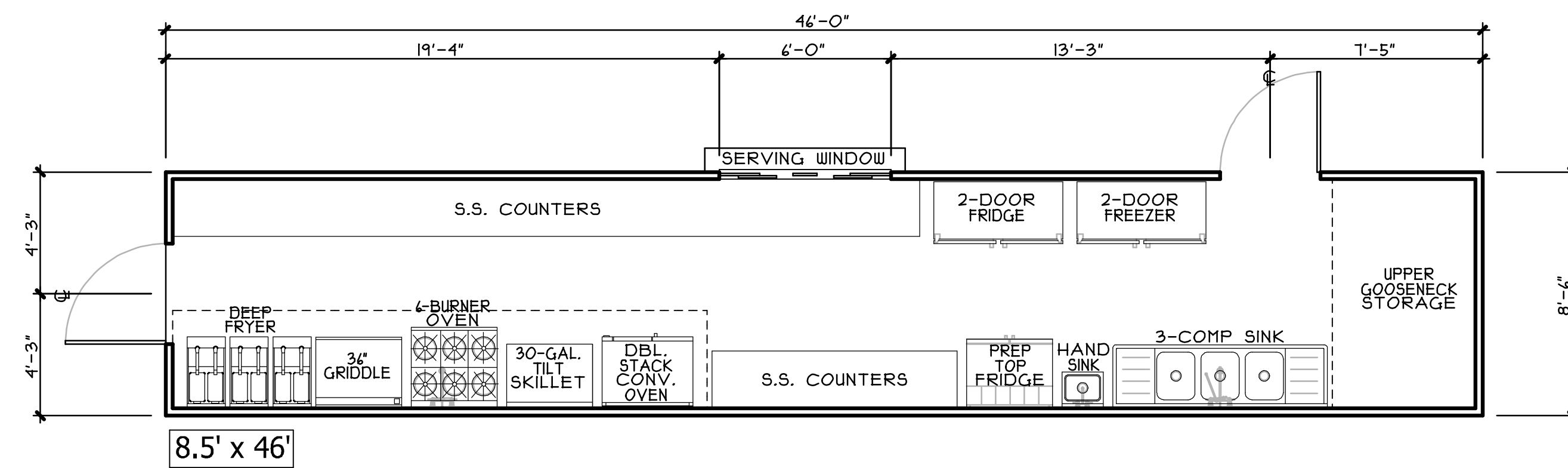


EQUIPMENT SCHEDULE			
REF.	MANUFACTURER	MODEL	DESCRIPTION
01			3-COMP. SINK
02			FOOD PREP. SINK
03			ICE MACHINE
04			S.S. HAND SINK
05			12" SAND. PREP. FRIDGE
06			4-COMP. STEAM TABLE
07			MOP SINK
08			S.S. RINSE SINK
09			DOUBLE RACK DISHWASHER
10			METAL SHELVING (18"x60")
11			S.S. TABLE (24"x36")
12			WATER HEATER
13			S.S. HAND SINK W/ SPLASH GUARD
14			ELECTRICAL SUB-PANEL
15			REACH-IN REFERIG.
14			S.S. SERVING COUNTER
17			SANDWICH PREP O/ FREEZER
18			6-BURNER RANGE / OVEN
19			24" CHAR BROILER
20			36" GRIDDLE
21			40# FRYER
22			36" SANDWICH PREP O/ REFRIG.
23			FIRE SUPPRESSION SYSTEM
24			10'-6" TYPE I S.S. HOOD
25			WALK IN REFER AND FREEZER
26			22'-0" TYPE I S.S. HOOD
27			36" GRIDDLE
28			36" TILT SKILLET
29			COMBI. OVEN
30			DLB STACK CONVECTION OVEN
31			(2) 40# FRYERS 15" EA.
32			3 COMP. SINK
33			S.S. HAND SINK
34			RINNAI TANKLESS WATER HEATER
35			125 A ELECTRICAL PANEL
36			RINNAI WATER HEATER / 50 GAL. TANK
37			NSF S.S. COUNTER
38			6-BURNER RANGE/CHEF'S BASE
39			36" SALAMANDER BROILER O/ RANGE

INTERIOR FINISHES

WALLS: ANODIZED ALUMINUM SMOOTH MIRROR FINISH
 FLOOR: 1/8" THK. ALUMINUM DIAMOND PLATE w/ INTEGRAL 3/8" RADIUS BASE 4" MIN. UP WALL
 CEILING: WHITE BAKED SMOOTH ALUMINUM



FLOOR PLAN KEYNOTES	
01	XXX
02	XXX

EQUIPMENT PLAN
SCALE: 1/4" = 1'-0"

MOBILE KITCHEN RENTAL - KITCHEN #10
 architecture
 engineering
 forensic sciences
ASSOCIATED DESIGN AND ENGINEERING INC.
 351 WEST CROYWELL AVE. SUITE 108 ■ FRESNO, CA 93711 ■ OFFICE: 559.431.2389 ■ FAX: 559.431.2074 ■ office@adeinc.biz ■ http://adeinc.biz
 MICHAEL D. JUNDT SE S33906
 TERRY MOORE P.E. 58562
 JAMES QUINN C9269
THESE ENGINEERS ARE THE REGISTERED PROFESSIONAL ENGINEERS OF ASSOCIATED DESIGN AND ENGINEERING INC. AND ARE NOT PROVIDING ANY PROFESSIONAL SERVICES FOR THIS PROJECT.

REVISIONS	

SHEET **A2-1**

JOB NO.	C20008
DATE	10/22/2020

H:\Commercial\2020\C20008 Mobile Kitchen #10\C20008.dwg 3/5/2020 10:21 AM BY SCOTTSS